

PROJECT: GKOH15-01

GREEN INFRASTRUCTURE IN THE OH-15 GRAVESEND BAY
CSO TRIBUTARY AREA, PHASE 1
BROOKLYN

COMMUNITY BOARD 14

Thomas Foley, P.E. Eric Macfarlane, P.E.
Commissioner First Deputy
Commissioner

Thomas Wynne, P.E. How Sheen Pau, P.E.
Deputy Commissioner Associate
Commissioner

Thu-Loan Dinh, P.E.
Assistant
Commissioner

Sofia Zuberbuhler-Yafar,
RLA
Program Director

FEBRUARY 2024

AGENDA



PROJECT INFO

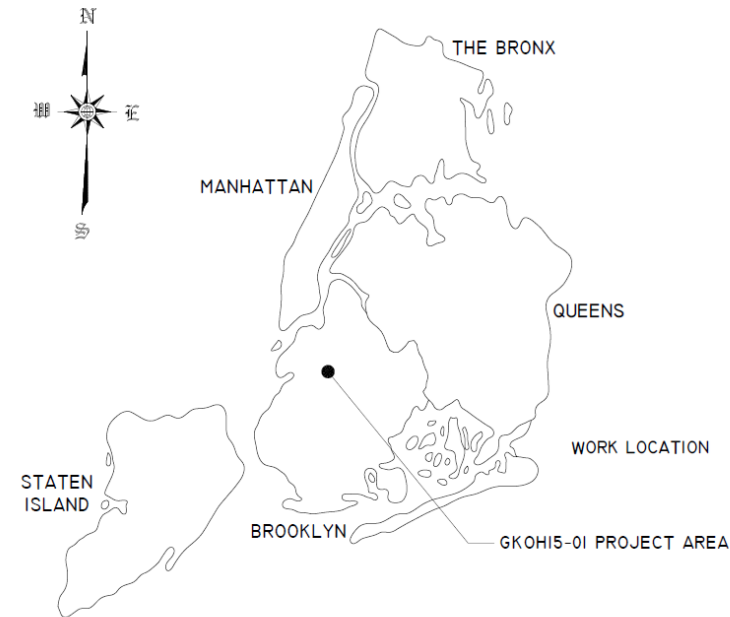
- Stats
- Schedule
- Context Map
- What is PPCP?

FEATURES

- Existing Conditions
- Locator Map
- Landmark
- Trolleys

PROJECT STATS

GKOH15-01



SCOPE: AREAWIDE GREEN INFRASTRUCTURE PROJECT
CAPTURING STORMWATER AND REDUCING CSO
EVENTS
VIA PERMEABLE PAVEMENT

LOCATION: “PHASE 1” OF THE OWLS HEAD OH-15 TRIBUTARY AREA
[861+ACRES TOTAL= PACKAGE 1- 530 ACRES, PACKAGE 2- 331
ACRES]

GI ASSET TYPES: ONLY PRECAST POROUS CONCRETE PANELS
(PPCP)

PROJECT SIZE: ± 101 STREET SEGMENTS WITH ~79,000 L.F. OF PPCP

COST: ± \$53M

FISCAL YEAR: 2025

DESIGN CONSULTANT: AECOM

DESIGN COST: \$10M [INCLUDES SURVEY & GEOTECH]

PROJECT SCHEDULE

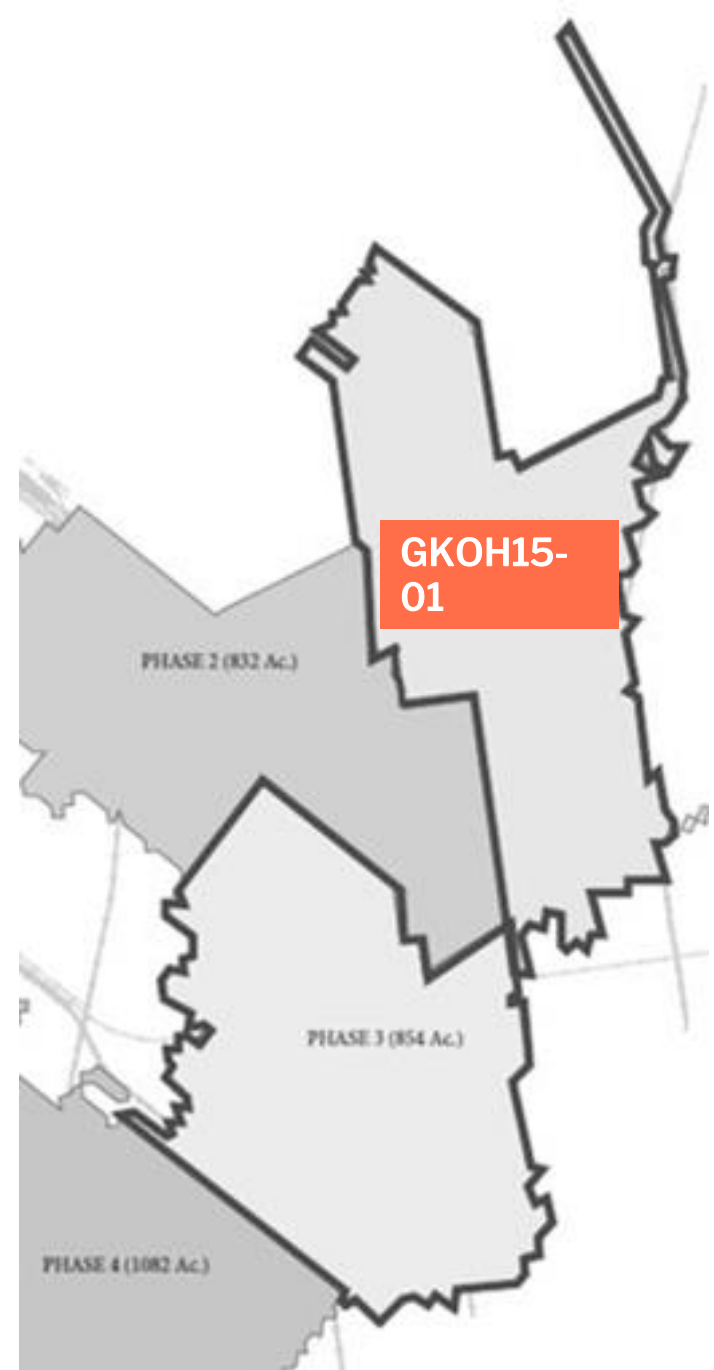
MILESTONE	GKOH15-01
DESIGN START	AUGUST 2017
MM1 (60%- PACKAGE 1)	JANUARY 2023
MM1 (60%- PACKAGE 2)	DECEMBER 2023
ALIGNMENT MEETING	FEBRUARY 2023
MM2 (90%- PACKAGE 1)	MAY 2023
MM2 (90%- PACKAGE 2)	MARCH 2024
FINAL DESIGN	JULY 2024
CONSTRUCTION START	SPRING 2025
CONSTRUCTION COMPLETION	SPRING 2027

CONTEXT MAP

NEIGHBORHOODS:

GKOH15-01: COMMUNITY BOARDS 7, 9, 12, 14

WINDSOR TERRACE, KENSINGTON, PROSPECT PARK SOUTH, DITMAS PARK, FLATBUSH, PROSPECT LEFFERTS GARDENS



DEP BEPA GI Standard Details



CITY OF NEW YORK
DEPARTMENT OF ENVIRONMENTAL PROTECTION
BUREAU OF ENVIRONMENTAL PLANNING & ANALYSIS - GREEN INFRASTRUCTURE DESIGN & CONSTRUCTION

STANDARD DESIGNS AND GUIDELINES FOR
GREEN INFRASTRUCTURE PRACTICES

MAY 2022

GI-400

CITY OF NEW YORK
DEPARTMENT OF ENVIRONMENTAL PROTECTION
BUREAU OF ENVIRONMENTAL PLANNING & ANALYSIS - GREEN INFRASTRUCTURE DESIGN & CONSTRUCTION

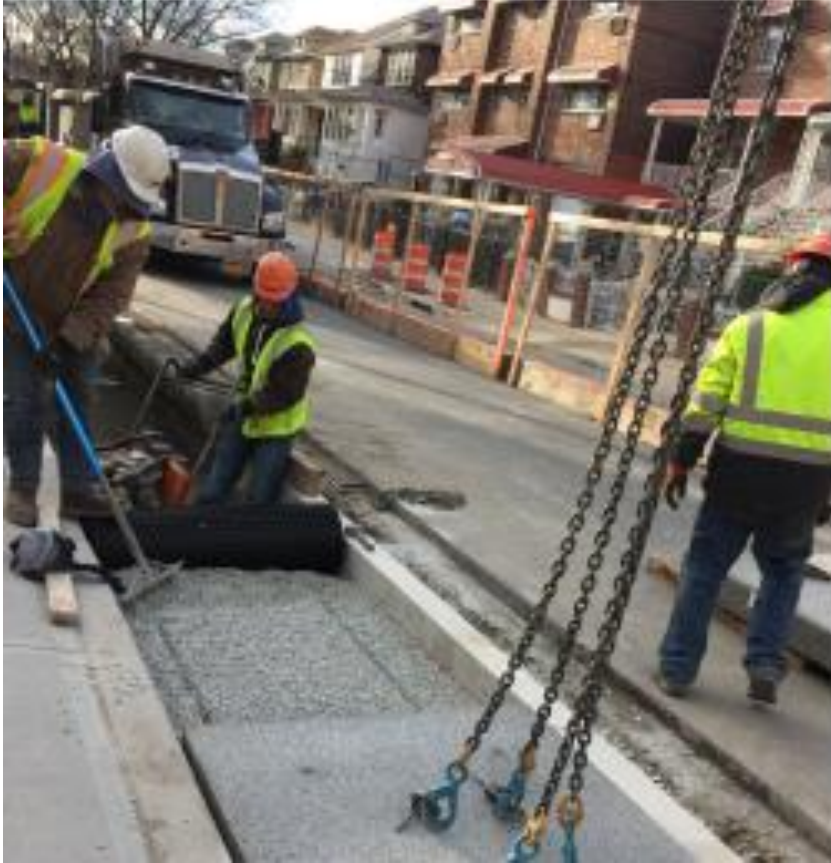
GI-400

GI-400
RIGHT-OF-WAY POROUS PAVEMENT
GREEN INFRASTRUCTURE
STANDARDS



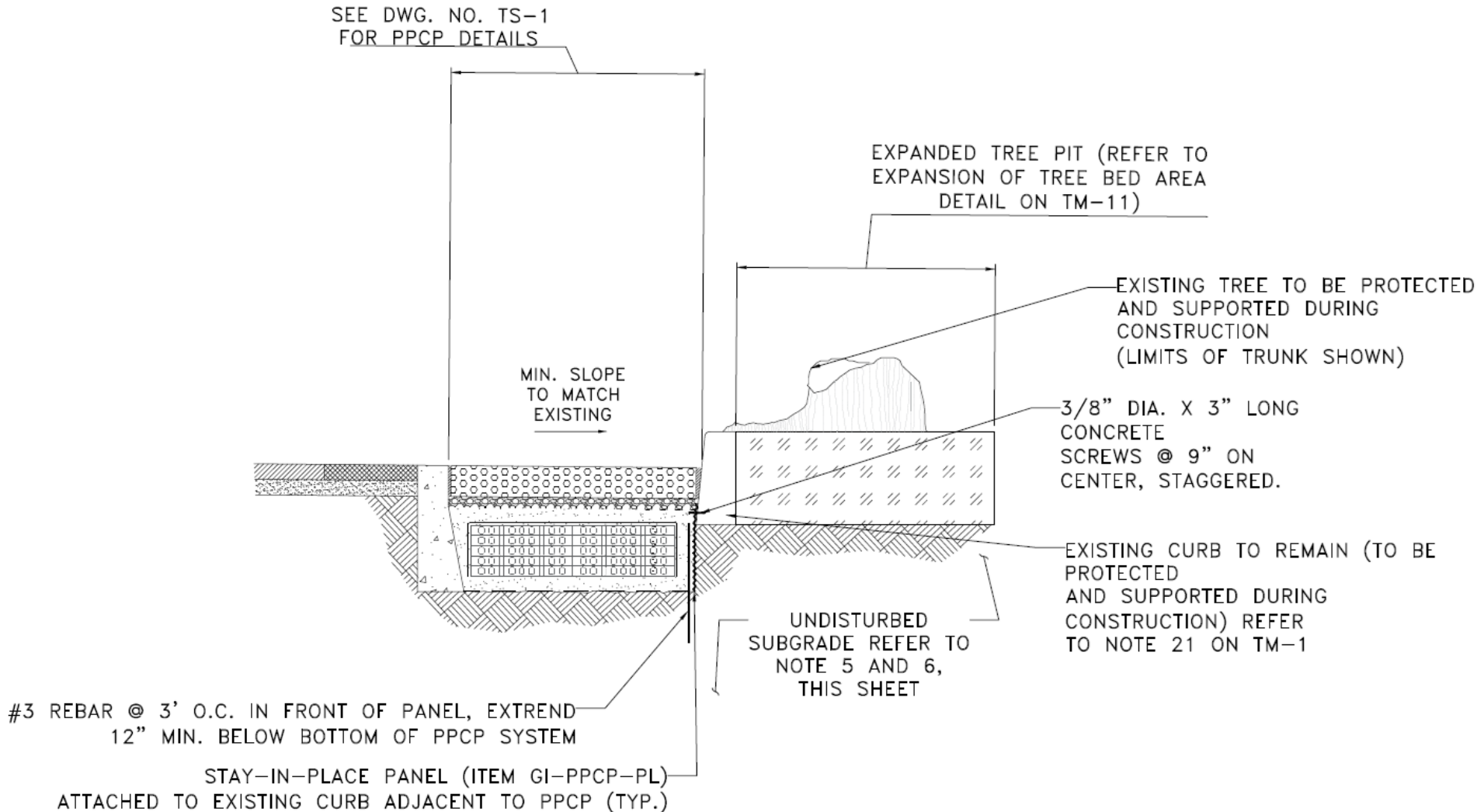
DEP STANDARDS

Detail For Precast Porous Concrete Panels



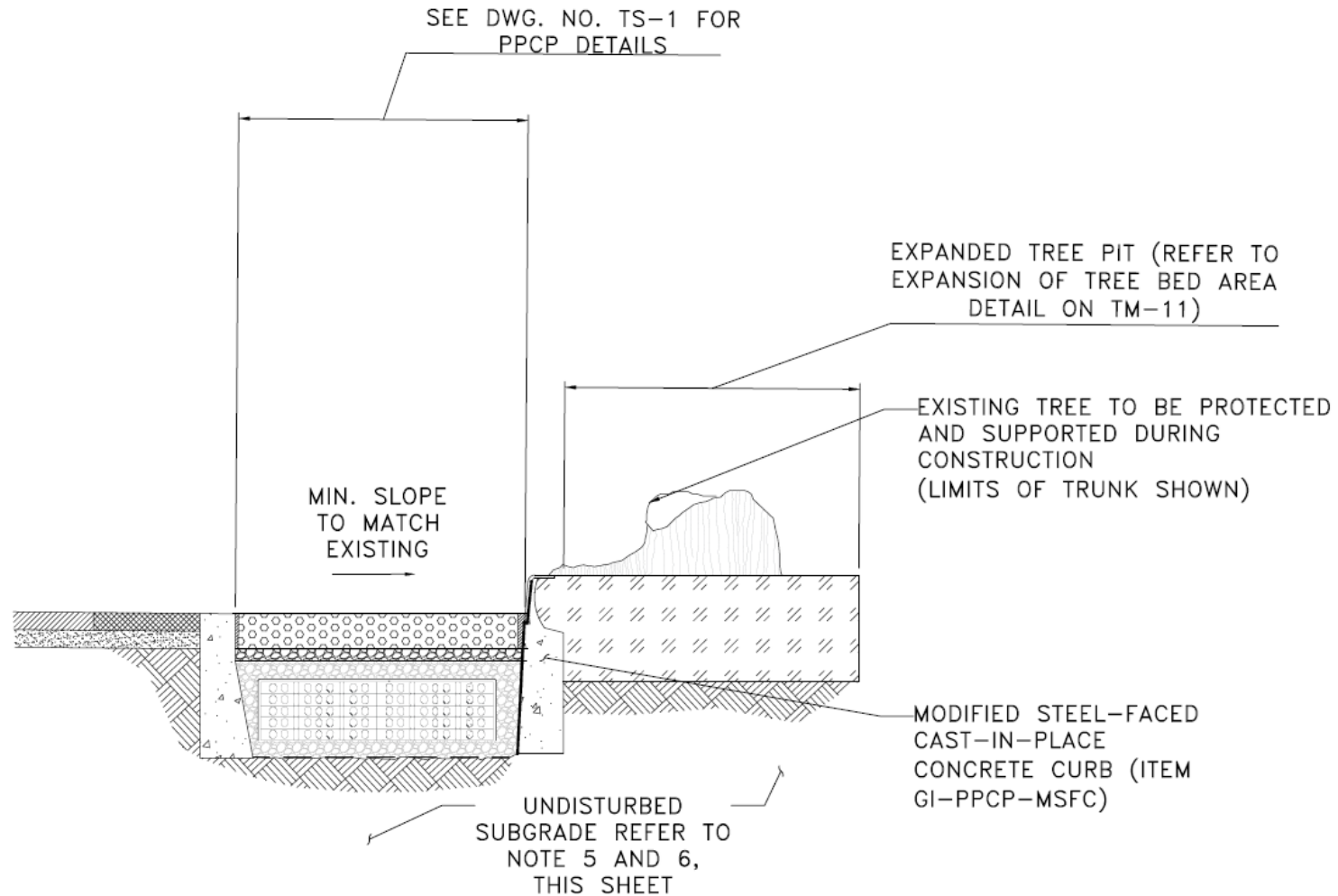
DETAIL

PPCP @ Existing Curb To Remain in order to Protect Existing Tree Roots



DETAIL

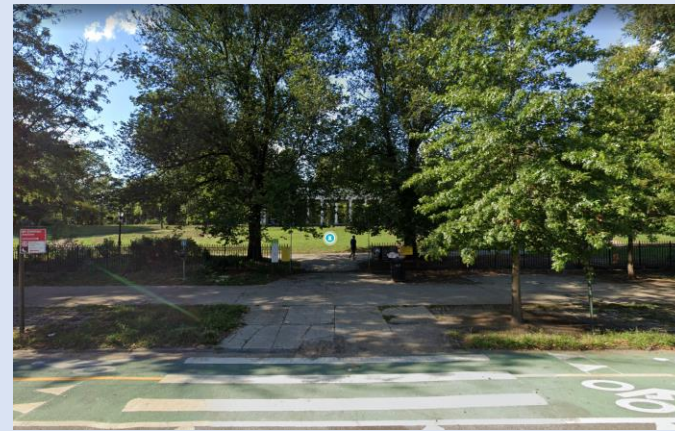
PPCP @ Modified Curb to Protect Existing Tree Roots



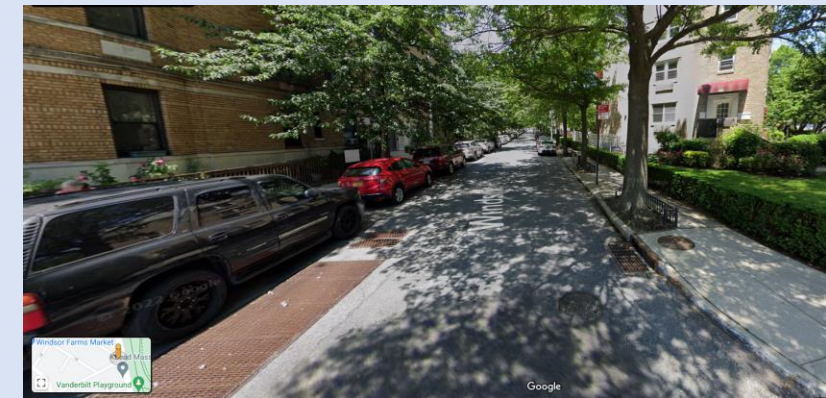
FEATURES



EXISTING CONDITIONS- GKOH15-01



- SIDEWALK
- PLANTERS
- LOW CURB
- REVEALS
- HISTORIC AREAS
- DRIVEWAYS
- NYC PARKS
- BIKE LANES
- TROLLEY TRACKS
-
-



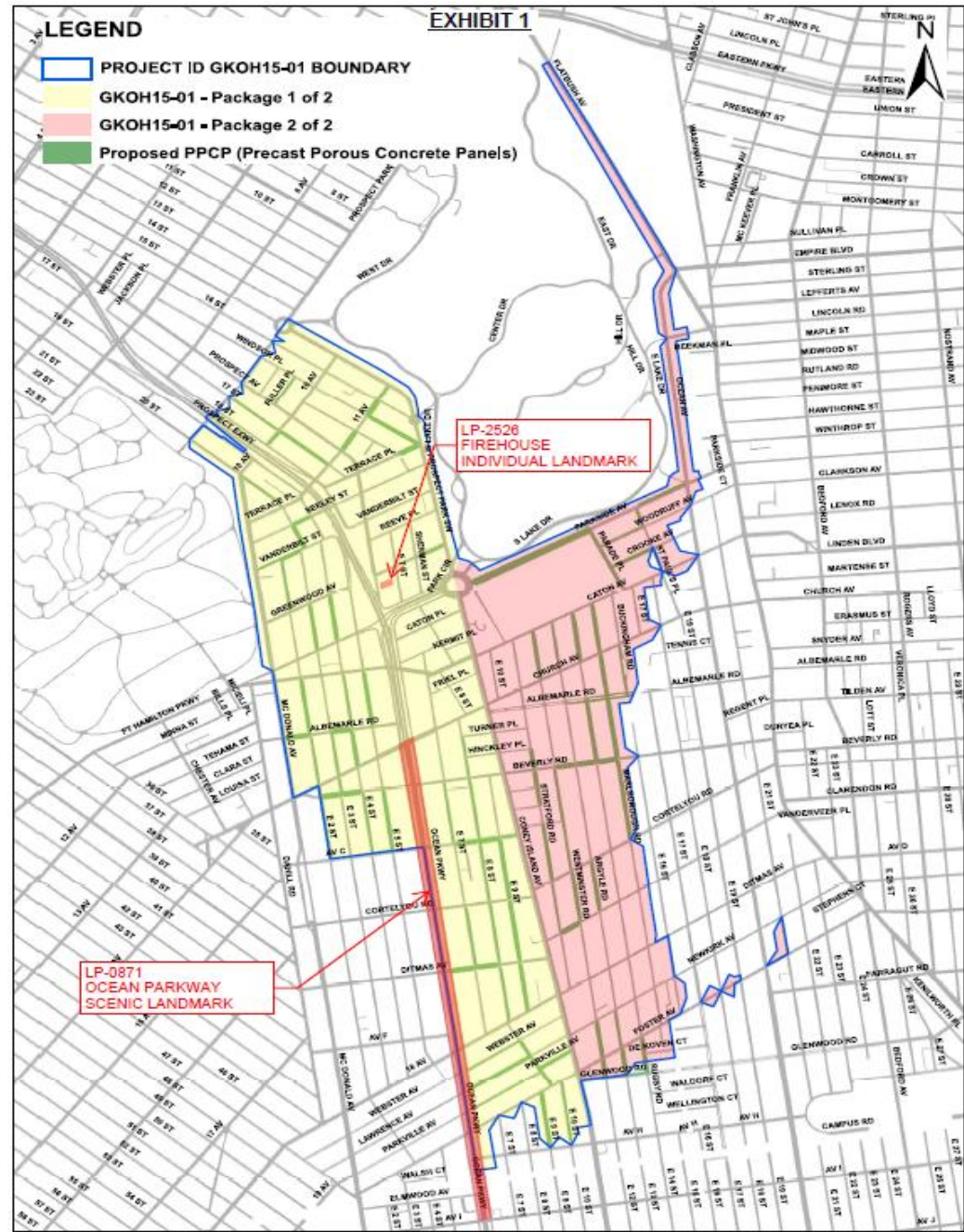
LOCATOR MAP GKOH15-01

PROJECT PHASES

- CONSTRUCTION WILL LIKELY START IN THE SOUTH

ADDITIONAL PROJECT SCOPE

- BIKE LANE ON PARKSIDE

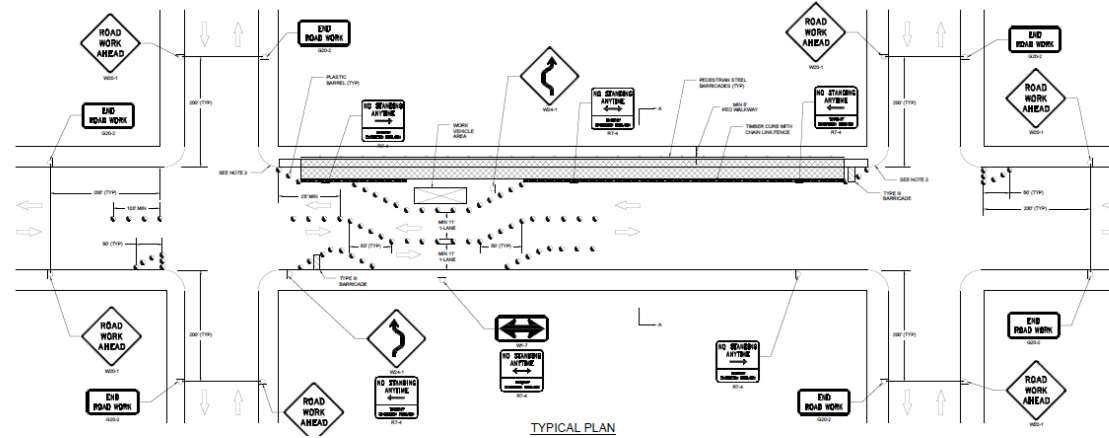


MAINTENANCE AND PROTECTION OF TRAFFIC

COORDINATING MPT AND PHASING

DOT WILL DESIGN
TRAFFIC CONTROL
STRATEGY IN WORK
ZONE

MAINTENANCE AND PROTECTION OF TRAFFIC
TWO-WAY STREET (80' ROW) DURING WORKING HOURS



THANK YOU.

GRANT EWING

718.391.3027

EWINGGR@DDC.NYC.GOV



QUESTIONS?