



SOUTH BROOKLYN PEDESTRIAN SAFETY IMPROVEMENTS

BOROUGH OF BROOKLYN

PROJECT ID: HWK1673

COMMUNITY BOARD #14 PRESENTATION

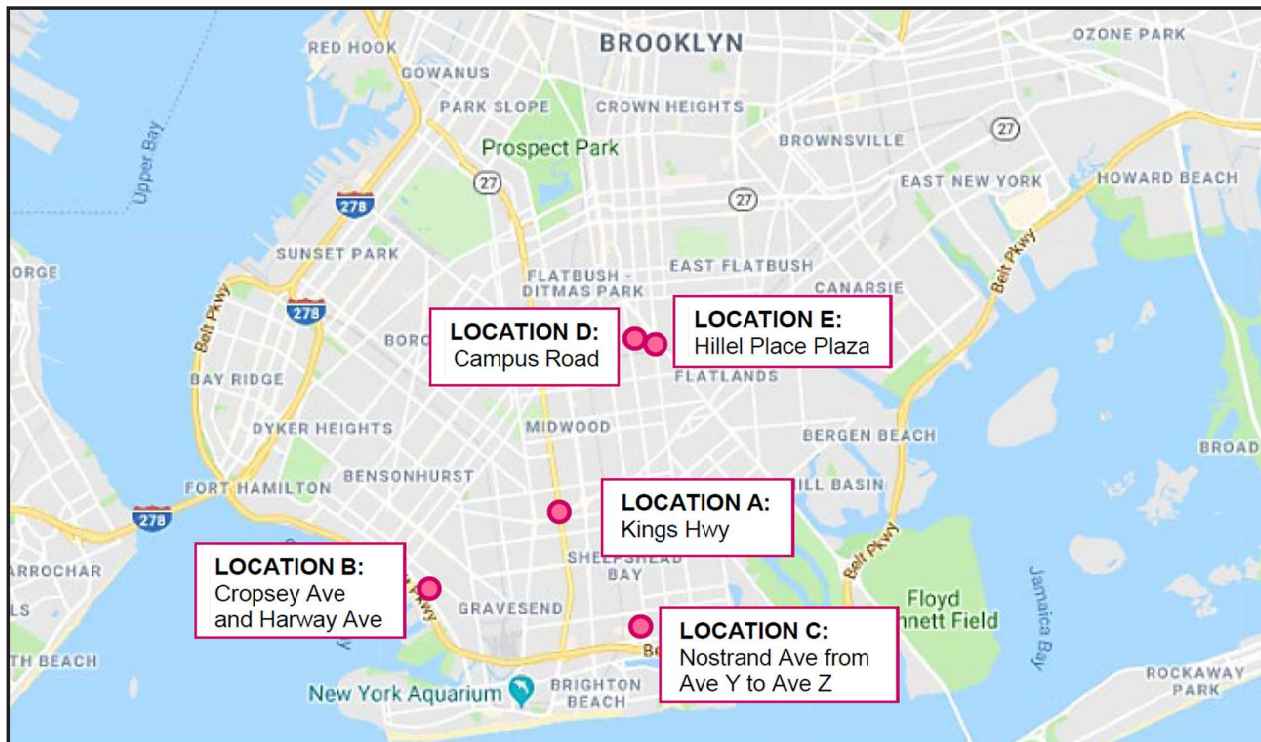
Zohran Mamdani
Mayor

Paul Ochoa
Commissioner

May 14, 2026

PROJECT LOCATIONS

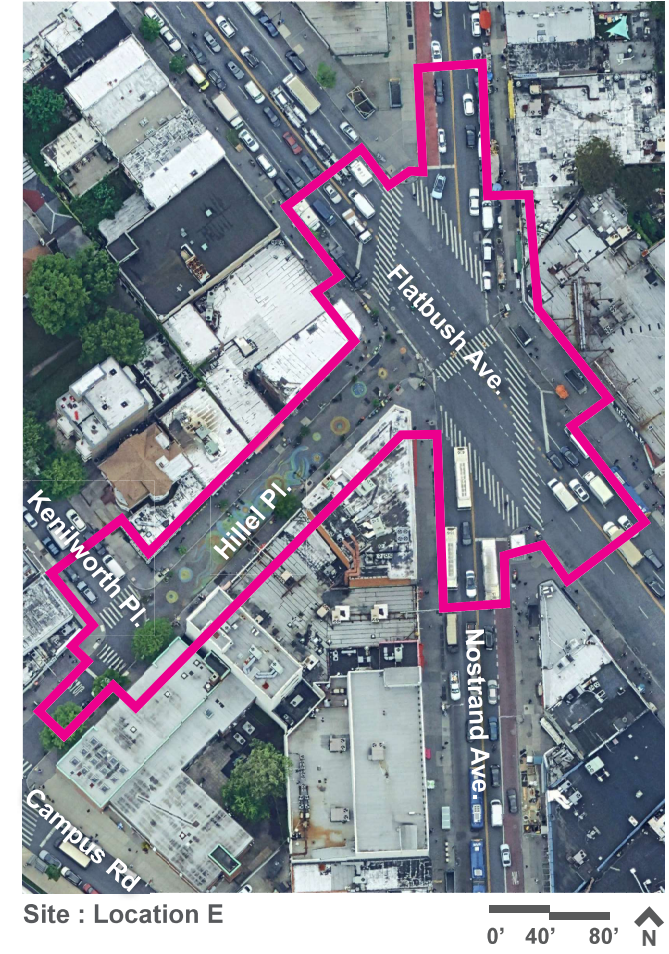
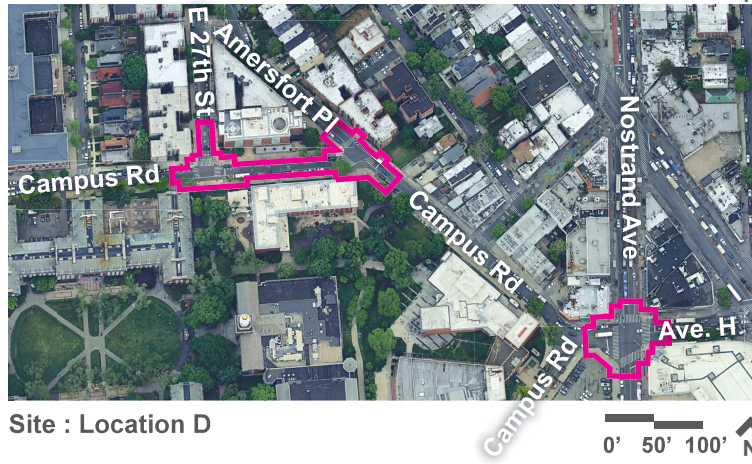
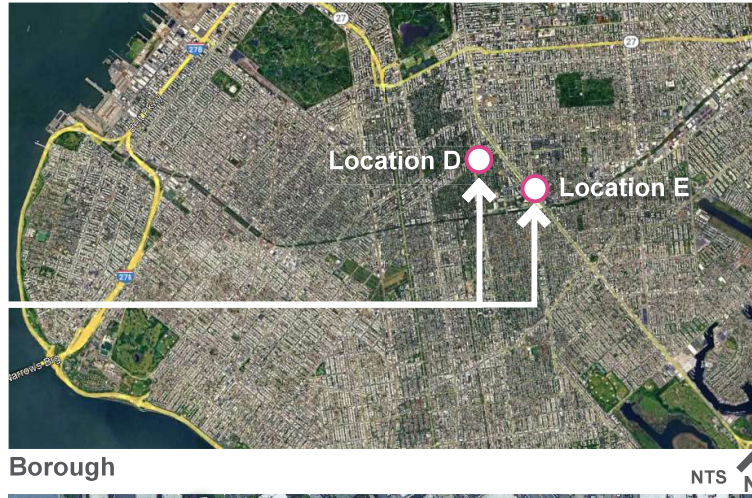
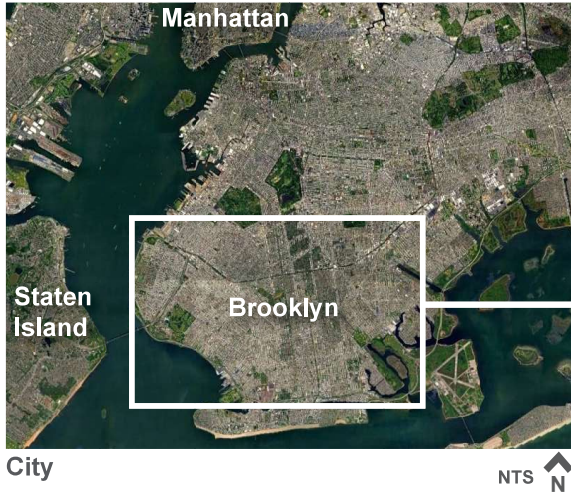
Proposed Safety Improvements at Five Targeted Locations



GENERAL WORK INCLUDES:

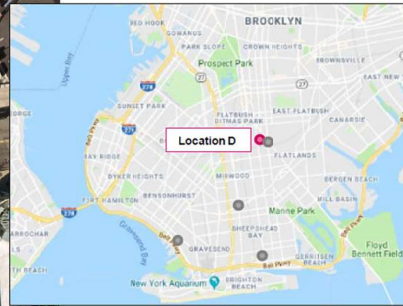
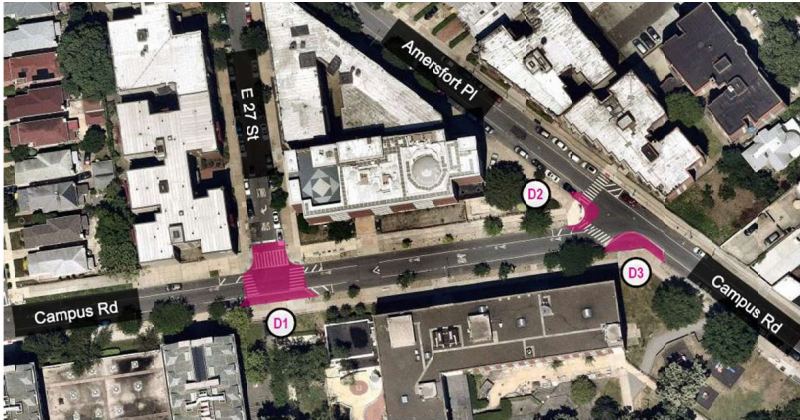
- Curb extensions
- Greenstreet triangle expansion
- Median tip and island construction
- Expanded median with new street trees
- Pedestrian island
- Raised intersections
- New permanent plaza
- ADA-compliant pedestrian ramps

PROJECT LOCATIONS D & E



EXISTING CONDITIONS - LOCATION D

Location D: Campus Road at E 27th Street and Amersfort Place;
Ave H and Nostrand Ave



After 2016 Street Improvement Project (SIP) implementation, Campus Road and E 27th Street, aerial view



After 2016 SIP implementation, Campus Road and Amersfort Place, aerial view



Nostrand Ave at Ave H, looking west

EXISTING CONDITIONS - LOCATION D



1 - Campus Road and East 27 St.



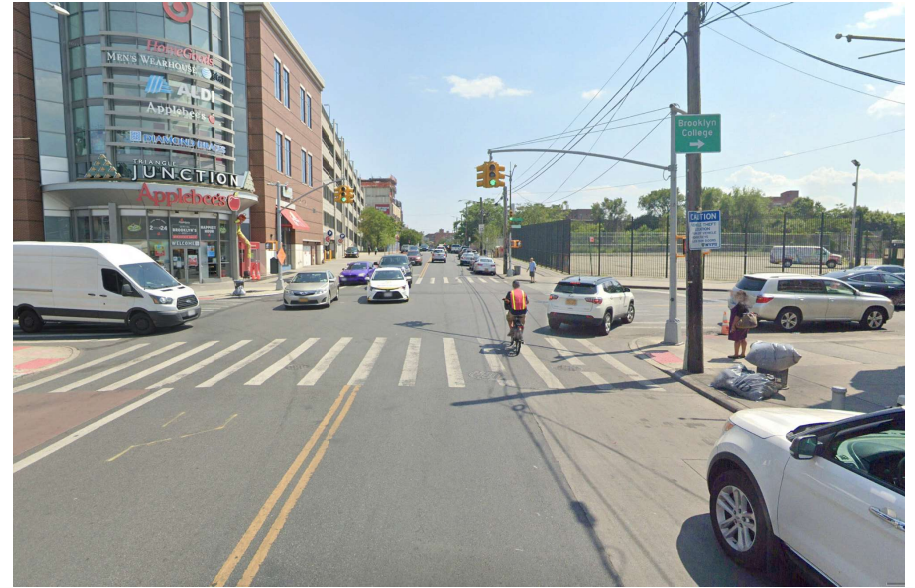
2 - Campus Road and Amersfort Pl.



EXISTING CONDITIONS - LOCATION D



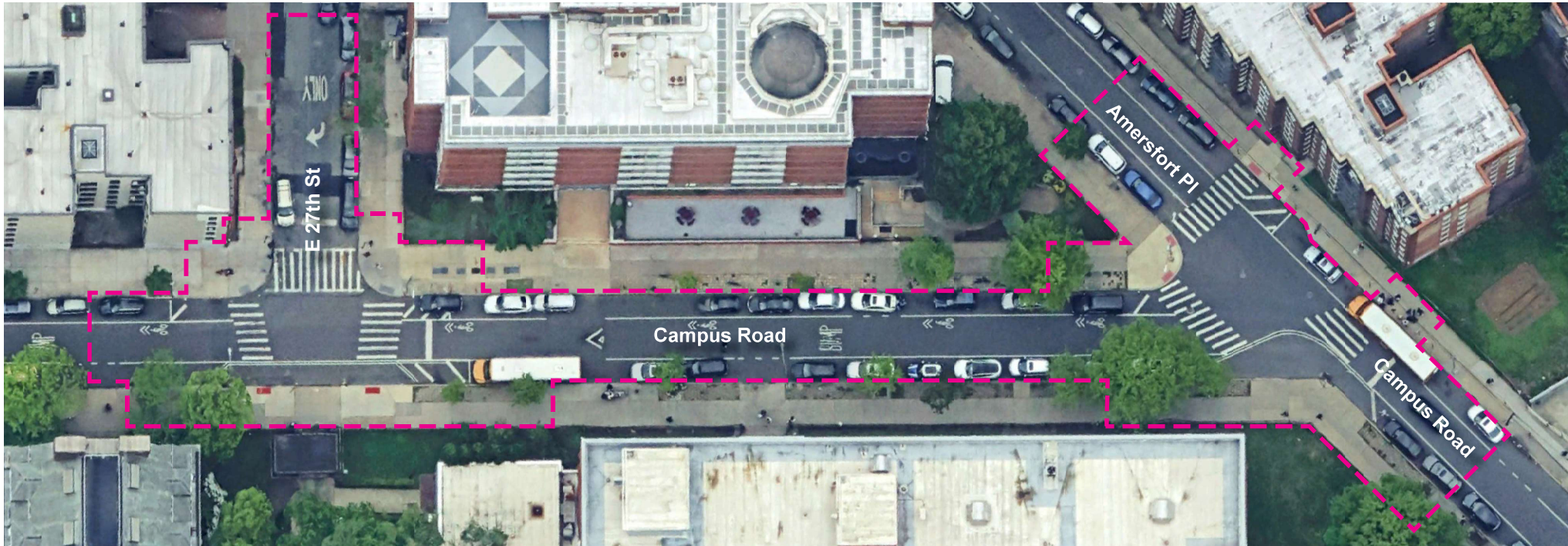
3 - Nostrand Ave. and Ave. H



4 - Nostrand Ave. and Ave. H



EXISTING CONDITIONS - LOCATION D



Legend

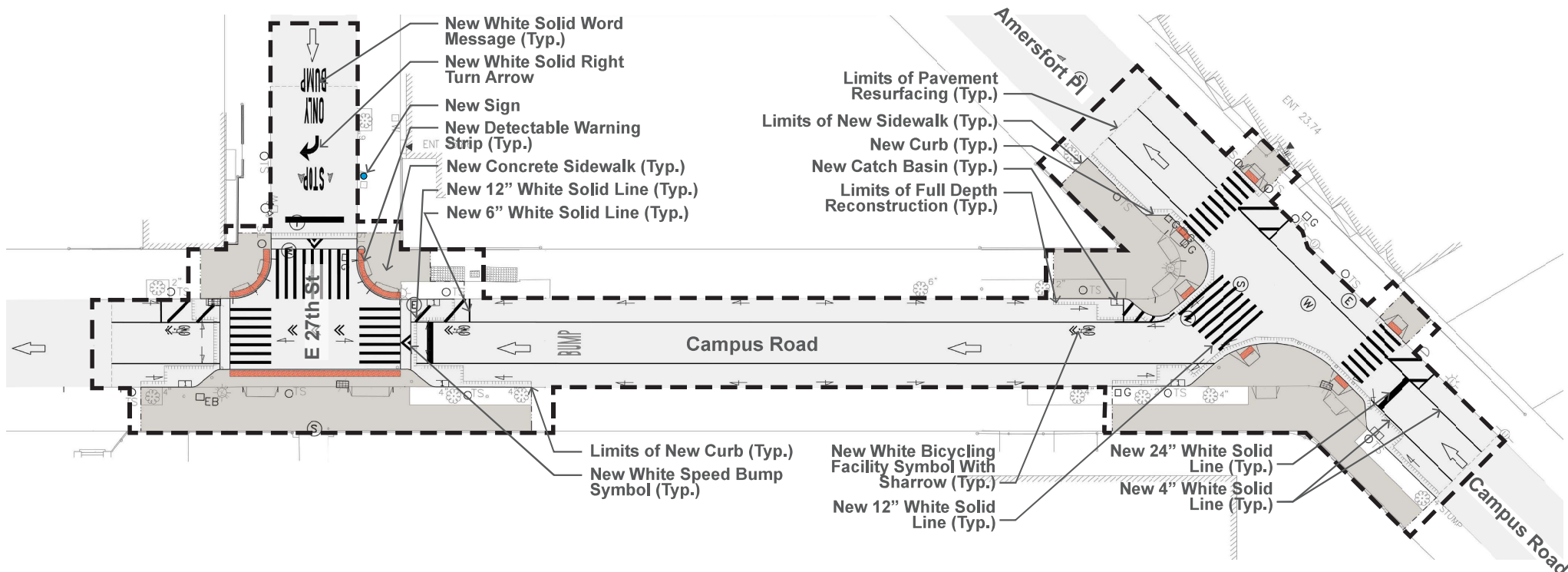
--- Project limit

High Pedestrian Volumes from Adjacent Schools:

- Brooklyn College
- Midwood High School
- PS 152, PS K315
- Nearby transit lines



PROPOSED CONDITIONS - LOCATION D



- New White Solid Word Message (Typ.)
- New White Solid Right Turn Arrow
- New Sign
- New Detectable Warning Strip (Typ.)
- New Concrete Sidewalk (Typ.)
- New 12" White Solid Line (Typ.)
- New 6" White Solid Line (Typ.)

- Limits of Pavement Resurfacing (Typ.)
- Limits of New Sidewalk (Typ.)
- New Curb (Typ.)
- New Catch Basin (Typ.)
- Limits of Full Depth Reconstruction (Typ.)

- Limits of New Curb (Typ.)
- New White Speed Bump Symbol (Typ.)

- New White Bicycling Facility Symbol With Sharrow (Typ.)
- New 12" White Solid Line (Typ.)

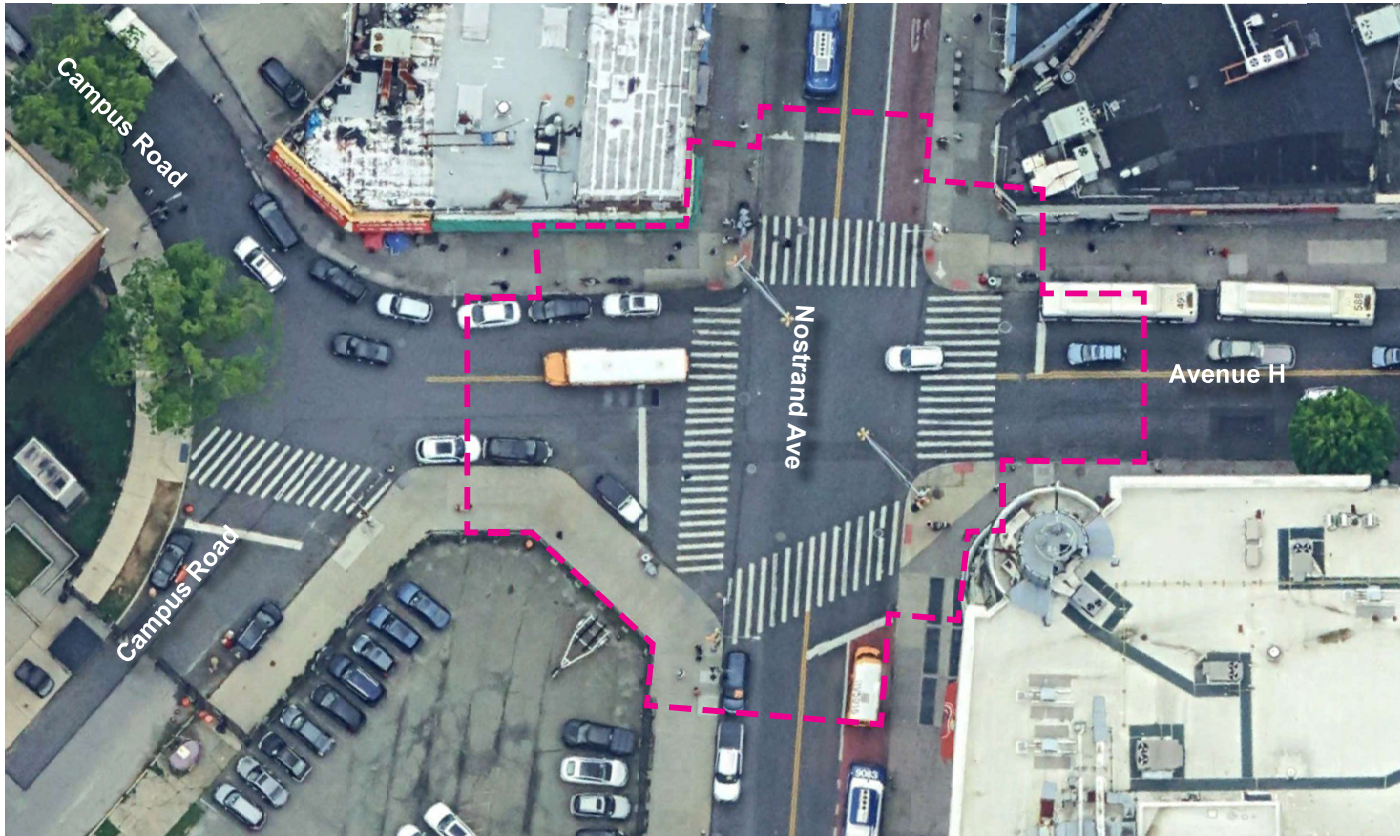
- New 24" White Solid Line (Typ.)
- New 4" White Solid Line (Typ.)

- Legend**
- Project limit
 - Sign

- Safety Improvements:**
- Revise to build out of the top of the T-curb extension
 - Raised intersection
 - Corner curb extensions
 - Traffic calming
 - ADA-compliant pedestrian ramps
 - Reduce crossing distances



EXISTING CONDITIONS - LOCATION D



Legend

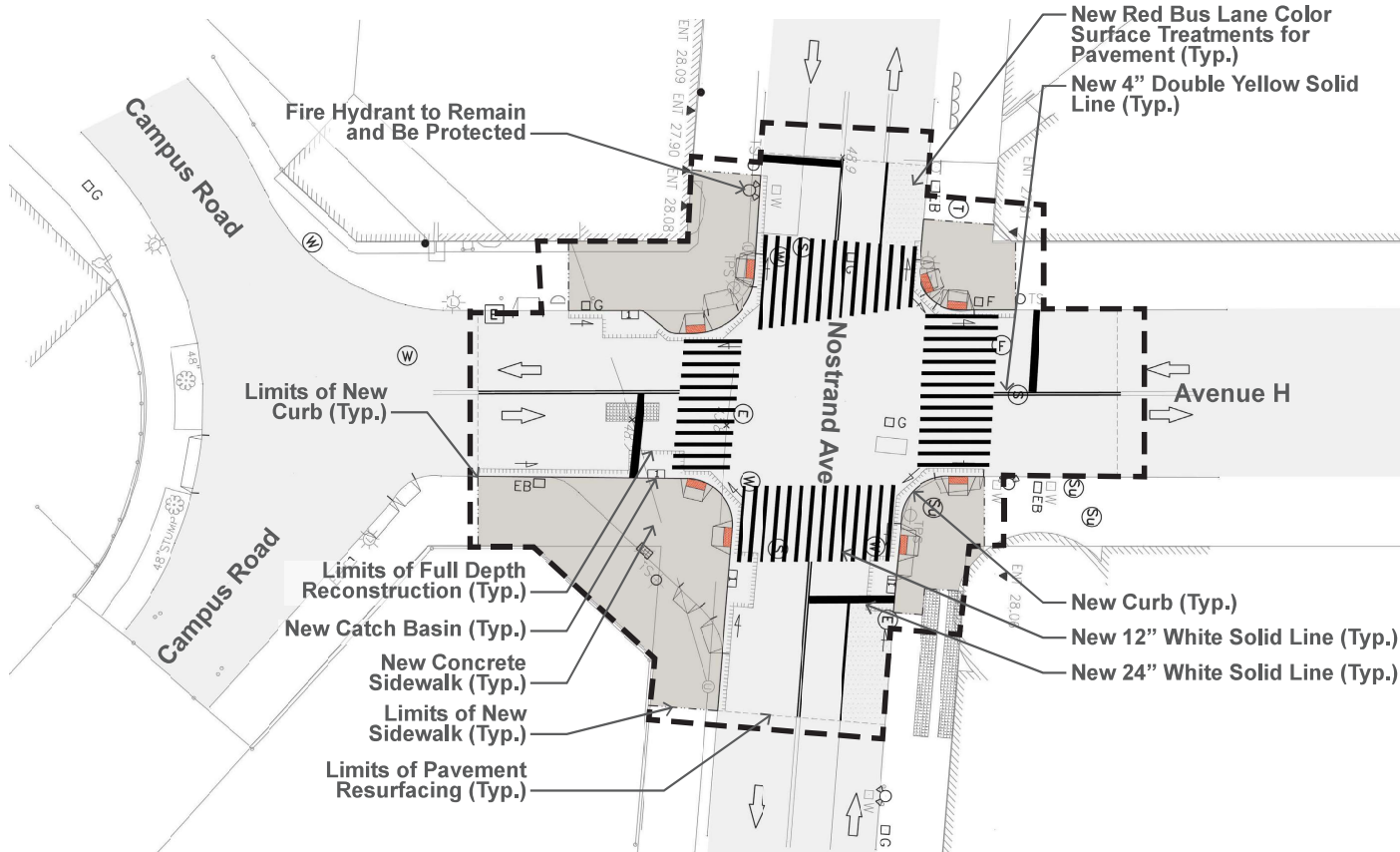
— Project limit

High Pedestrian Volumes from Adjacent Schools:

- Brooklyn College
- Midwood High School
- PS 152, PS K315
- Nearby transit lines



PROPOSED CONDITIONS - LOCATION D



Legend

--- Project limit

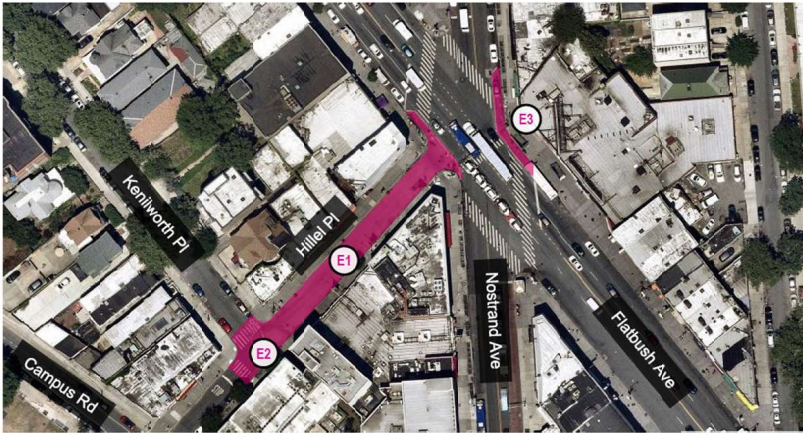
Safety Improvements:

- Corner curb extensions
- Normalize Avenue H intersection
- Traffic calming
- ADA-compliant pedestrian ramps
- Reduce crossing distances

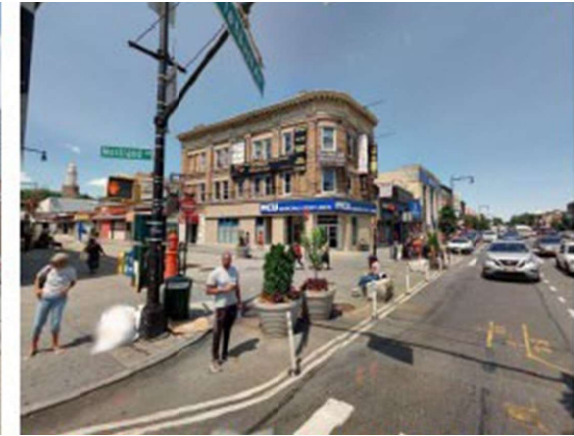


EXISTING CONDITIONS - LOCATION E

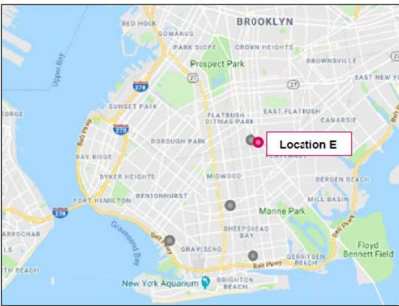
Location E: Hillel Place Plaza



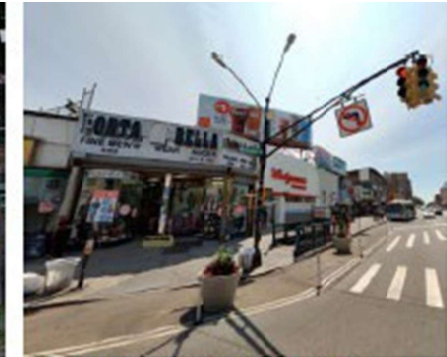
Hillel Place Plaza SIP – Looking Southwest



Painted Curb Extension – Flatbush and Nostrand (Southwest Corner)



Hillel Place Plaza SIP – Looking Northeast



Painted Curb Extension – Flatbush and Nostrand (Northeast Corner)

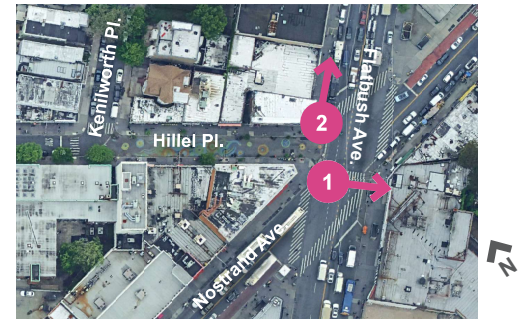
EXISTING CONDITIONS - LOCATION E



1 - Subway entrance



2 - Plaza entrance with boulders, stepped planters and flexible bollards at the front



EXISTING CONDITIONS - LOCATION E



3 - DOT stepped planters located throughout the site



4 - Empty tree pit with granite block



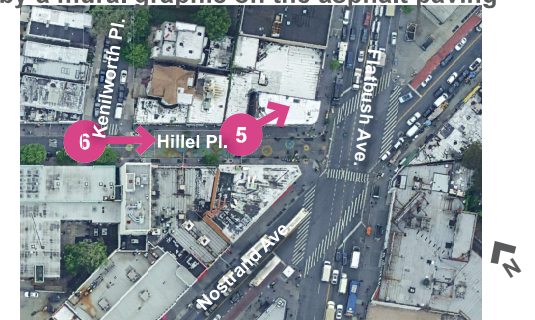
EXISTING CONDITIONS - LOCATION E



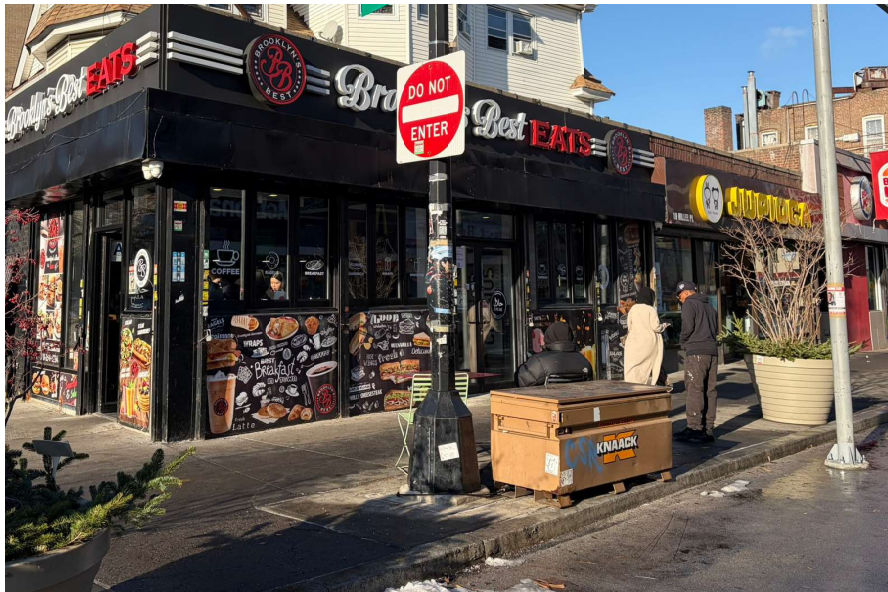
5 - Locked tables and chairs located along the site



6 - A shade structure at the end of the street, approximately 24 feet wide by 80 feet long, accompanied by a mural graphic on the asphalt paving



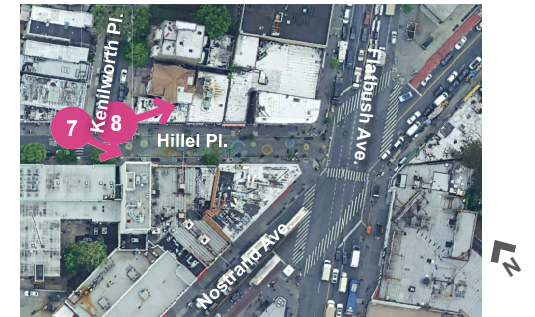
EXISTING CONDITIONS - LOCATION E



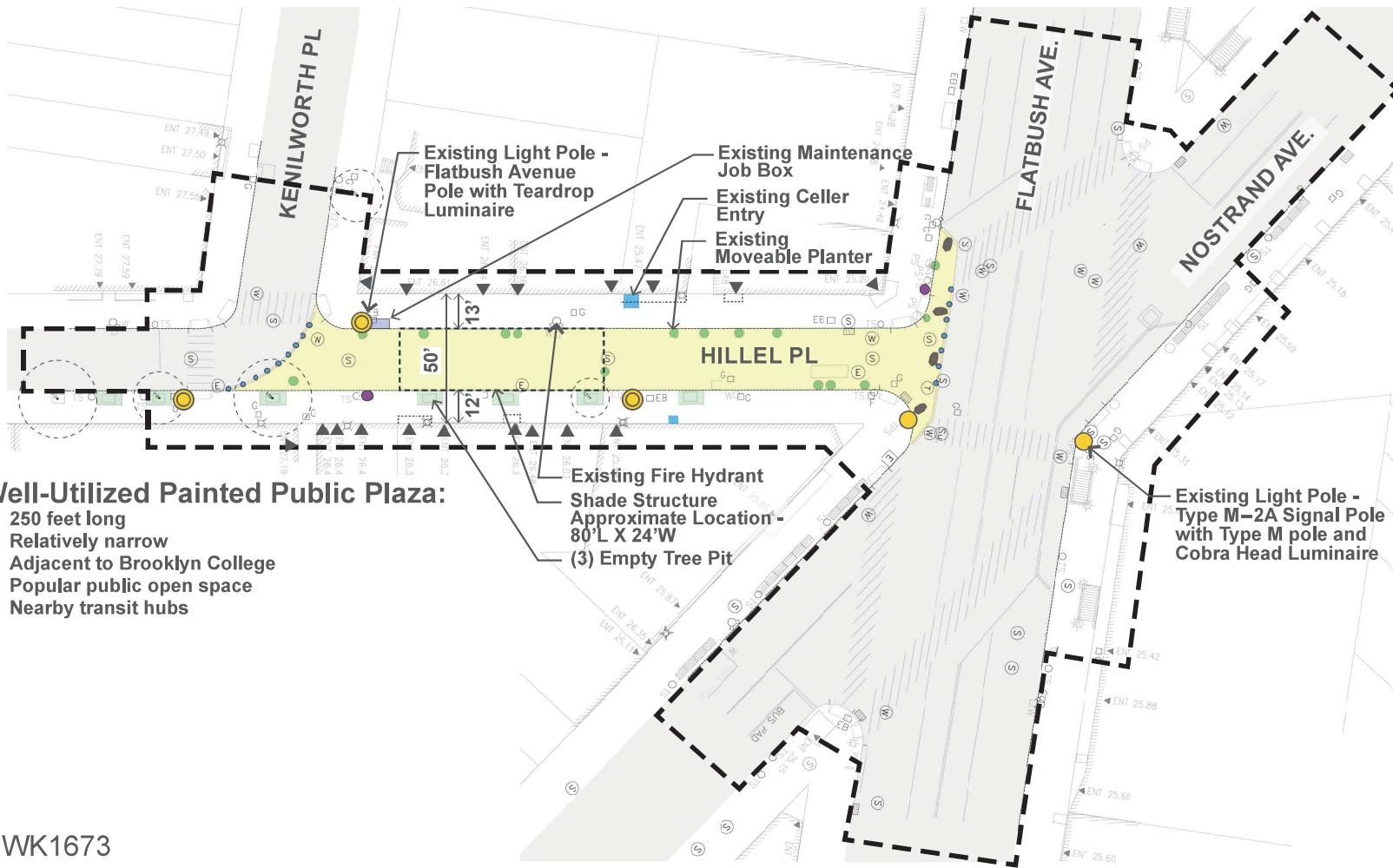
7 - Storage box at the street corner



8 - Flexible bollards at the end of the plaza, about half missing; Flatbush Avenue light pole in front



EXISTING CONDITIONS - LOCATION E



- Legend**
- Project limit
 - Building Egress
 - Existing Tree to Remain
 - Existing Cobble-Lined Tree Pit
 - Existing Moveable Planter
 - Existing Flexible Bollard
 - Existing Light Pole - Type M-2A Signal Pole with Type M pole and Cobra Head Luminaire
 - Existing Light Pole - Flatbush Avenue Pole with Teardrop Luminaire
 - Existing Waste Receptacles
 - Existing Granite Block
 - Existing Catch Basin
 - Building Overhang

Well-Utilized Painted Public Plaza:

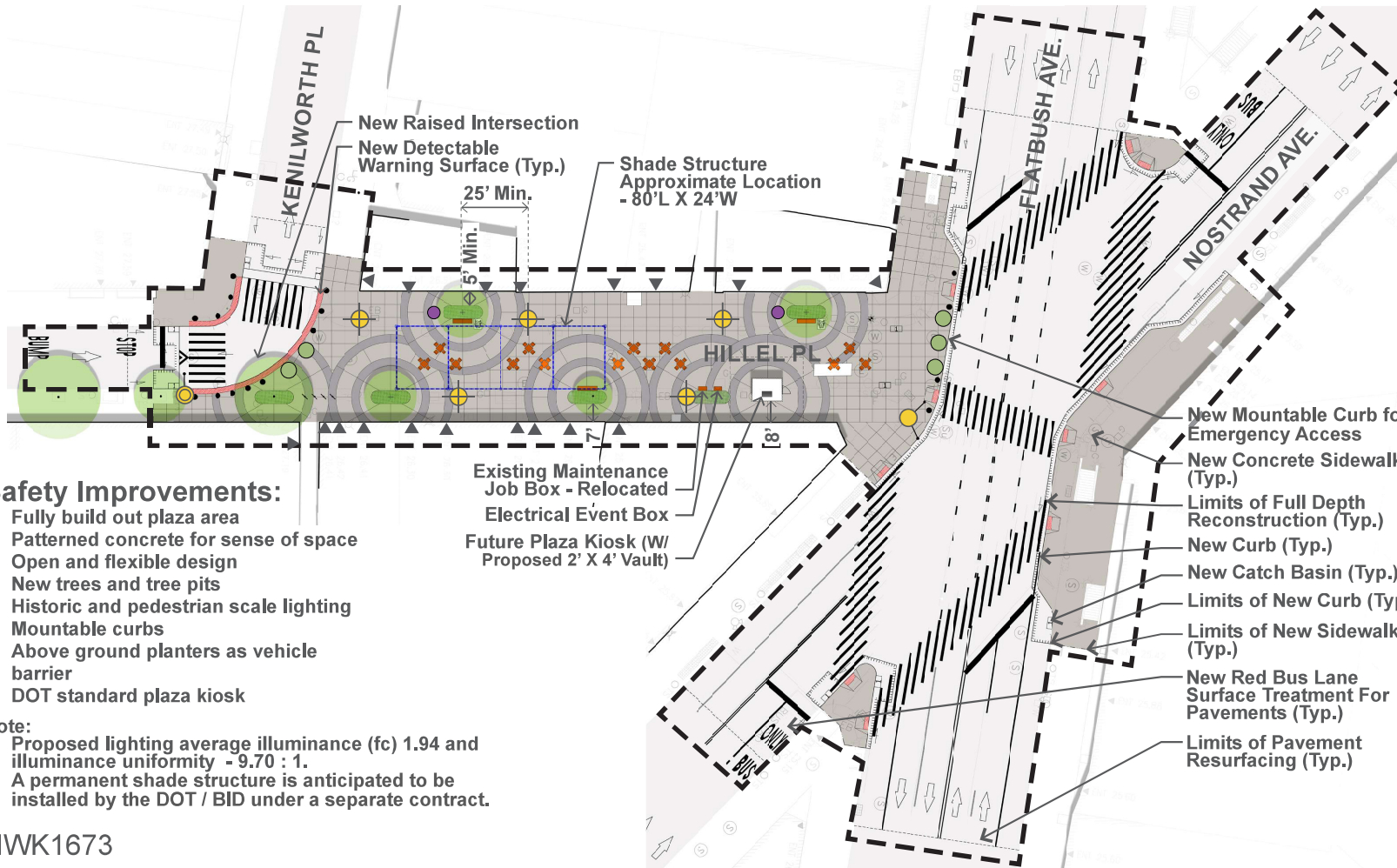
- 250 feet long
- Relatively narrow
- Adjacent to Brooklyn College
- Popular public open space
- Nearby transit hubs

Existing Fire Hydrant
Shade Structure
Approximate Location -
80'L X 24'W
(3) Empty Tree Pit

Existing Light Pole -
Type M-2A Signal Pole
with Type M pole and
Cobra Head Luminaire



PROPOSED CONDITIONS - LOCATION E



Safety Improvements:

- Fully build out plaza area
- Patterned concrete for sense of space
- Open and flexible design
- New trees and tree pits
- Historic and pedestrian scale lighting
- Mountable curbs
- Above ground planters as vehicle barrier
- DOT standard plaza kiosk

- Note:
1. Proposed lighting average illuminance (fc) 1.94 and illuminance uniformity - 9.70 : 1.
 2. A permanent shade structure is anticipated to be installed by the DOT / BID under a separate contract.

Legend

- Project limit
- ▼ Building Egress
- Standard DOT Unpigmented Concrete Pavement
- Standard DOT Pigmented (Dark) Concrete Pavement
- Existing Tree
- + Proposed Tree
- Planter with Stainless Steel Planting Edge
- DOT Step Planter - Relocated
- DOT Pipe Bollard
- Existing Light Pole - Type M-2A Signal Pole with Type M pole and Cobra Head Luminaire
- Existing Light Pole - Flatbush Avenue Pole with Teardrop Luminaire
- NYC DOT Flushing Meadows Pole + LED Luminaire
- ✕ Movable Table and Chair
- DOT "Citybench" - Backed
- ↓ DOT "Cityrack"
- DOT Waste Receptacles - Relocated

0' 10' 20' 40' ↗

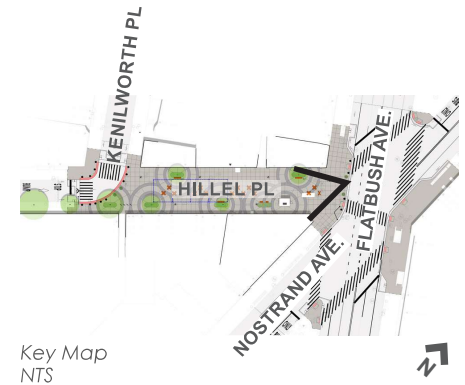
RENDERING



Joint Venture



Note:
Shade structure shown is anticipated to be reinstalled by others separate from this capital project.

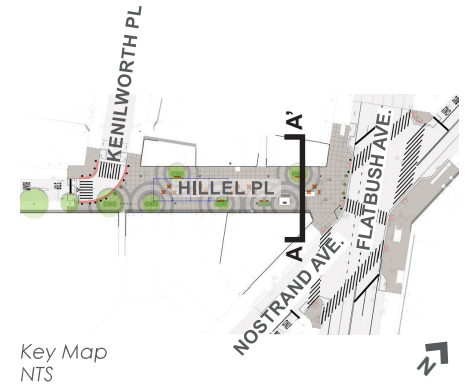


SECTION A-A'



Note:
Shade structure shown is anticipated to be reinstalled by others separate from this capital project.

30' X 30' Staging Area



Key Map
NTS



HWK1673

PAVING MATERIALS AND SITE FURNISHINGS



Precedent Image: Corona Plaza (NYC DOT) - Two-toned concrete paving design precedent



NYC DOT Standard Unpigmented Concrete



NYC DOT Standard Pigmented Concrete - Dark



NYC DOT Flushing Meadows Pole + LED Luminaire With Integrated Electrical Outlet



NYC DOT CityBench, Backed
Dimensions: 7'-6" Lg. x 20.5" Dp.



Stainless Steel Planting Edge

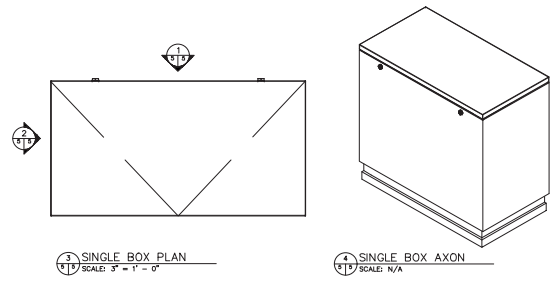
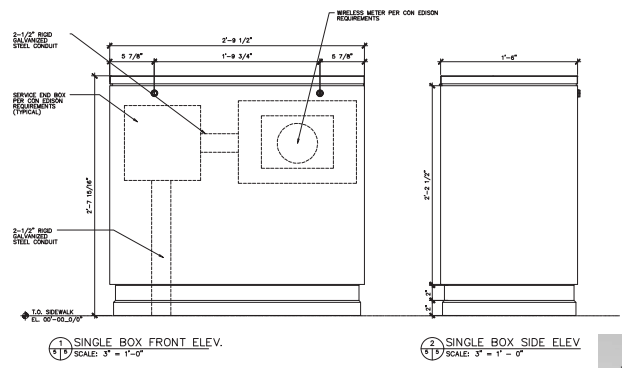


NYC DOT CityRack
Dimension: 33.7" diameter
Cast Metal



Planting Buffer (In Planters / At Grade)
DOT Step Planter

PAVING MATERIALS AND SITE FURNISHINGS



Electrical Event Box for panel board and power receptacle outlets (with top loading)
 Size: 2'-9" Wd. x 1'-6" Dp. x 2'-8" Ht.
 Finish: Stainless Steel
 Mounting: Concrete Base

HWK1673



Moveable Tables + Chairs
 Manufacturer: Landscape Forms
 Product: Parc Centre Line
 Color(s): Equal Mix of Buttercup, Cranberry & Grass
 Chair Dimensions: 22" Wd. x 21" Dp. x 33" Ht.
 Table Dimensions: 28" Square x 30" Ht.



Provided for Reference to Material Finishes Only



Maintenance Job Box
 Dimension: 42"Wd. x 19"Dp. x 23 3/8"Ht.



NYC DOT Pipe Bollard
 Dimension: 37 5/8" Ht., 5 9/16" diameter
 Color: Black



Relocated NYC DOT Standard Waste Receptacles
 Manufactured: Maglin Site Furniture
 Product: 600 Series
 Dimensions: 22 3/8" Dia. x 36 1/4" Ht.
 Capacity: 32 Gal., Standard

PROJECT SCHEDULE



- Anticipated Design Completion: August 2027
- Anticipated Construction Start: Summer 2028
- Anticipated Construction Completion: End of 2030



ISI ENVISION SUSTAINABILITY FRAMEWORK

ISI ENVISION SUSTAINABILITY FRAMEWORK



ENVISION

- Framework that includes 64 sustainability and resilience indicators organized around 5 categories
- Address areas such as human well being, mobility, community development, collaboration, and resilience resource conservation and carbon reduction
- Applicable to a wide variety of infrastructure assets



Energy	Water	Waste	Transportation	Landscape	Information
Distribution	Treatment	Solid waste	Airports	Public Realm	Telecom
Hydroelectric	Distribution	Recycling	Roads / Highways	Parks	Cables
Coal	Capture / Storage	Hazardous	Bikes / Pedestrians	Ecosystem Services	Internet
Natural Gas	Stormwater	Waste	Railways	Natural Infrastructure	Phones
Wind	Flood Control	Collection & Transfer	Transit	Environmental Remediation	Data Centers
Solar	Nutrient Management		Ports		Sensors
Biomass			Waterways		

ENVISION CATEGORIES AND LEVEL OF ACHIEVEMENT



Quality of Life

Wellbeing, Mobility, Community



Leadership

Collaboration, Planning, Economy



Resource Allocation

Materials, Energy, Water



Natural World

Siting, Conservation, Ecology



Climate & Resilience

Emissions, Resilience





COMMUNITY OUTREACH

COMMUNITY OUTREACH DURING CONSTRUCTION

Stakeholder and community outreach activities will continue throughout the construction phase, to alert you of upcoming construction work, advisories, completion of milestones and activities, as well as community engagement events:

COMMUNITY OUTREACH PROCESS:



COMMUNITY OUTREACH



Community Construction Liaison (CCL) responsibilities are as follows:

- First point of contact, maintain on-site presence and communications.
- Identify, resolve, and/or proactively address issues and inquiries.
- Distribute advisories and weekly construction activities newsletter.
- Provide 72-hour and 24-hour (confirmation or cancellation) advisories for work impacts by email and door to door.
- Attend community board monthly DSC meetings.

COMMUNITY CONSTRUCTION LIAISON INVOLVEMENT



Keeping You Informed.

The on-site CCL works directly with the project team. CCL will address community concerns, respond to inquiries, attend meetings, as needed, as well as distribute project related materials to keep the community informed and notified.

PROJECT INFORMATION CARD (PIC)



ADVISORIES

COMMUNITY ADVISORY

No Parking
Modify Catch Basin and
Install Chute Connections

Mon, Dec 15 thru Fri, Dec 19, 2025
 Work Hours: 7:00 AM - 3:30 PM

Locations include northwest corners of
 - Avenue A and East 3rd Street
 - 1st Avenue and East 3rd Street

Curbside parking restrictions in effect near work zones; vehicles will be towed. Please observe posted signage. These temporary restrictions support ramp improvements. Anticipate machinery, noise, and dust during work hours.

WEEKLY LOOK AHEAD BULLETIN

WEEKLY CONSTRUCTION BULLETIN

08/06/18 - 08/10/18

DATE	TIME RANGE	LOCATION	ACTIVITY
08/06/18	7:00 am - 8:00 pm	East Side of Avenue A	Excavation for the purpose of water main replacement.
08/07/18	7:00 am - 8:00 pm	Between 1st and East 3rd Street	Water and sewer for the purpose of water main replacement.
08/08/18	7:00 am - 8:00 pm	South Side of West 1st Street	Water and sewer for the purpose of water main replacement.
08/09/18	7:00 am - 8:00 pm	East Side of Avenue A	Excavation for the purpose of water main replacement.
08/10/18	7:00 am - 8:00 pm	Between 1st and East 3rd Street	Water and sewer for the purpose of water main replacement.

PROJECT UPDATES

Project Update

Manhattan
 October 2025
 Project ID: MED645

Installation of Distribution Water Main Various Locations

The New York City Department of Design and Construction (NYC DDC) continues to manage the MED645 distribution water main installation project. MED645 work includes, but is not limited to water main installation at various locations, utility upgrades, and the installation of new hydrants.

Please note that NYC DDC is managing this project on behalf of the senior agency, the New York City Department of Environmental Protection (NYC DEP).

Work Completed as of October 2025:

- Chelsea (E 21st Street between 10th Avenue and 11th Avenue)**
 An infrastructure work has been completed, and the contractor is installing the punch list.
- East Side (E 15th St, Ave 5th and 6th Avenues)**
 An infrastructure work has been completed, and the contractor is finalizing the punch list.
- Midtown (E 29th Street (at Madison and 5th Avenue))**
 The contractor completed part of the utility restoration and continued hand care excavations moving west toward 5th Avenue.
- Union Square (E 10th Street to E 10th Street on Irving Place)**
 The contractor is performing hand care excavations to install the gas main and make way for our water main.

Fourth Quarter 2025: The anticipated work is as follows:

The contractor will continue hand care excavations to install the water main utility facilities. A scheduled water shutdown will take place to facilitate the replacement and installation of a new water main on W 29th Street between Madison Avenue and 6th Avenue.



THANK YOU

Q & A



APPENDIX

PROPOSED CONDITIONS - LOCATION E

FDNY AUTOTURN



Legend
--- Project limit

